



Product Name: *Chaga Gold*[™]

Full Spectrum Chaga MycoProduct[™] blended
50/50 with sustainably harvested wild collected Chaga

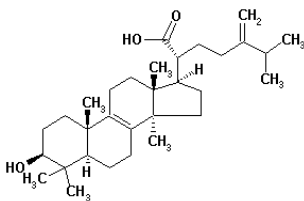
U.S. and International Patents Protection

Chaga Gold*[™] is the Most Potent Chaga product available anywhere today!** A unique feature of Chaga is that it concentrates any radioactive compounds in its environment, such as plutonium, cesium and Iodine. This means the Chaga from the traditional collection areas of the Far East is no longer safe to consume since the Fukushima disaster. ***Chaga Gold*[™]** is a blend of 50% Lab Cultivated Certified Organic Chaga grown in Nevada, and 50% wild Chaga harvested in the Northern United States. Every batch of Chaga Gold is tested and certified to be 100% Free of all radiation products. ***Guaranteed!

Chaga is the most popular medicinal mushroom in Russia and the ex-Soviet Union states. It has only recently been discovered in the West, and is fast becoming one of the most popular medicinal mushroom species in American and Europe. Now with ***Chaga Gold*[™]** you have the option of the most potent 100% American, certified Radiation Free Chaga in the world!

- Guaranteed 100% DNA Certified through Independent testing to be authentic *Inonotus obliquus*, not some “Closely Related” species as with other brands !
- Guaranteed Lab Cultivated portion is 100% USDA Certified Organic !
- Guaranteed 100% Vegetarian – Grown under Strict Laboratory Conditions !
- Guaranteed to be derived directly from native Russian strains.
- Guaranteed to be 100% American Grown and Cultivated in FDA registered biotech facility ! No Imported Ingredients!

”Guaranteed Authentic” *Inonotus obliquus* Chaga – Now grown in America !
Full Spectrum Mycoproduct and various extracts available



Aloha Medicinals Inc.

2300 Arrowhead Dr.
Carson City, NV 89706
Tel (775) 886-6300

Email: sales@alohamedicinals.com



Product Name : *Inonotus obliquus* -- Chaga Gold™

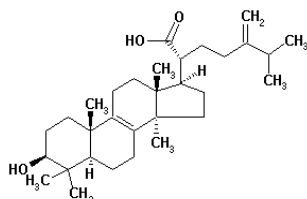
ITEM	SPECIFICATION	TEST METHOD
Identification	Match NIH - NCBI Genebank data	Genetic Testing through DNA BLAST
Purity Tests		
Total Plate Count:	< 10,000 cfu / gram	Heavy Metals analyzed by a Perkin-Elmer HPLC apparatus using the technique called TotalQuant II
Yeast and Mold:	< 25 cfu / gram	
Total Coliform Bacteria:	Negative	Total Polysaccharides Profile analyzed by AMI Modified Megazyme test method for 1,3-1,6 beta glucans and other polysaccharides
E. coli	Negative	
Salmonella:	Negative	
Staph Aureus:	Negative	
Pseudomonas:	Negative	
Heavy Metals:	< 10 ppm	Other tests performed as Standard methods of analysis for Hygienic Chemists
Total Polysaccharide Content:	> 25 %	
Loss on Drying	not more than 7.0 %	10 grams 105 degrees C for 1 hr
Ash	Not more than 1.0 %	Standard methods of analysis for Hygienic Chemists
Appearance	Granular powder, beige in color	Visual
Odor	Characteristics	Subjective bioassay
Other Ingredients	none	-
Particle Grind Size	80 mesh	As specified by customer

Typical Uses for Maitake:

- Used alone or as a component in Immune Enhancing Formula
- Used in soluble form as an additive for health drinks
- Popular as an ingredient in general health formulas

Up until now, most Chaga came from Siberia. Now you can source your Chaga from the Largest, Most Reliable American supplier!

**If you need 1 kilogram or 100 tons, We are your stocking source !
all Organic - all Kosher - all GMP - all American!**



Aloha Medicinals Inc.

2300 Arrowhead Dr.
Carson City, NV 89706
Tel (775) 886-6300

Email: sales@alohamedicinals.com

