



Product Name: *Red Reishi*

Also known as

Ganoderma lucidum

Available as Full Spectrum MycoProduct™ and Concentrated 8:1 and 16:1 purified & standardized extract

Now Available in Nano Formulation !

NanoReishi™

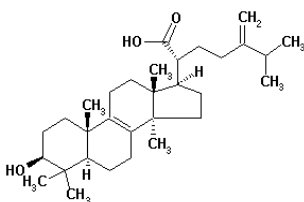
U.S. and International Patents Protection

Ganoderma lucidum, commonly known as ***Red Reishi*** is probably the most well known and widely studied medicinal mushrooms in the world. It is known in China by the name Ling Zhi, and has been revered for centuries throughout the Orient as the Mushroom of Longevity.

Reishi has anti-inflammatory properties which allow it to positively affect the respiratory system. It is great for battling allergies or bronchitis, and it can reduce the blood pressure issues related to hypertension. Reishi's high concentration of polysaccharides, which are linked to aiding cancer remission; acting as hypoglycemic agents; and strengthening the immune system. Reishi also scavenges free radicals, which retard aging and promote general healthfulness on a systemic, cellular level. It is also known to protect the liver and help instill calmness. Reishi has anti-bacterial and anti-viral properties as well.

- Guaranteed 100% DNA Certified through Independent testing to be authentic *Ganoderma lucidum*, not some "Closely Related" species as with some other brands !
- Guaranteed 100% USDA Certified Organic !
- Guaranteed 100% Vegetarian – Grown under Strict Laboratory Conditions !
- Guaranteed to be derived directly from native Asian strains.
- Guaranteed to be 100% American Grown in FDA registered biotech facility !

"Guaranteed Authentic" *Ganoderma lucidum* – Now grown in America !
Full Spectrum Mycoproduct and various extracts available



Aloha Medicinals Inc.

2300 Arrowhead Dr.
Carson City, NV 89706
Tel (775) 886-6300

Email: sales@alohamedicinals.com



Product Name: *Ganoderma lucidum* – Red Reishi

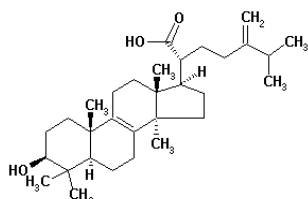
ITEM	SPECIFICATION	TEST METHOD
Identification	Match NIH - NCBI Genebank data	Genetic Testing through DNA BLAST
Purity Tests		
Total Plate Count:	< 1000 cfu / gram	Heavy Metals analyzed by a Perkin-Elmer HPLC apparatus using the technique called TotalQuant II
Yeast and Mold:	< 25 cfu / gram	Polysaccharides analyzed by modified Megazyme test method for 1,3-1,6 beta glucans and other polysaccharides
Total Coliform Bacteria:	Negative	Other tests performed as Standard methods of analysis for Hygienic Chemists
E. coli	Negative	
Salmonella:	Negative	
Staph Aureus:	Negative	
Pseudomonas:	Negative	
Heavy Metals:	< 10 ppm	
Total Polysaccharide Content:	> 30 %	
Loss on Drying	not more than 7.0 %	10 grams 105 degrees C for 1 hr
Ash	Not more than 1.0 %	Standard methods of analysis for Hygienic Chemists
Appearance	Granular powder, beige in color	Visual
Odor	Characteristics	Subjective bioassay
Other Ingredients	none	-
Particle Grind Size	From nano size up to 80 mesh	As specified by customer

Typical Uses for Red Reishi:

- Used alone or as a component in Immune Enhancing Formula
- Used in soluble form as an additive for health drinks
- Popular as an ingredient in athletic formulas
- Used in blood pressure formulas
- Also available in Broken Cell Wall Reishi spore powder and Reishi spore oil.

Up until now, most Reishi came from Japan and China. Now you can source your Reishi from the Largest, Most Reliable American supplier!

If you need 1 kilogram or 100 tons, We are your stocking source!



Aloha Medicinals Inc.

2300 Arrowhead Dr.
Carson City, NV 89706
Tel (775) 886-6300

Email: sales@alohamedicinals.com

