



Product Name: *Shiitake*

Also known as

Lentinula edodes

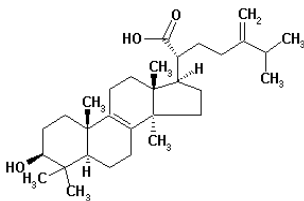
Available as Full Spectrum MycoProduct™ and Concentrated 8:1 and 16:1 purified & standardized extract

U.S. and International Patents Protection

Shiitake, also known by the Latin name ***Lentinula edodes*** and known in China as Shang Gu or Qua Gu, is one of the most well known and widely studied medicinal mushrooms. It is the raw material source of the third most widely used anticancer medicine in the world, Lentinan. In fact, there are more than a dozen different compounds from Shiitake which have been found to increase immune function, lower cholesterol levels or have other beneficial effects on health.

- Guaranteed 100% DNA Certified through Independent testing to be authentic ***Lentinula edodes***
- Guaranteed 100% USDA Certified Organic !
- Guaranteed 100% Vegetarian – Grown under Strict Laboratory Conditions !
- Guaranteed to be derived directly from native Asian wild strains.
- Guaranteed to be 100% American Grown in FDA registered biotech facility !

**”Guaranteed Authentic” *Shiitake* – Now grown in America !
Full Spectrum Mycoproduct and various extracts available**



Aloha Medicinals Inc.

2300 Arrowhead Dr.
Carson City, NV 89706
Tel (775) 886-6300

Email: sales@alohamedicinals.com



Product Name: Shiitake – Lentinula edodes

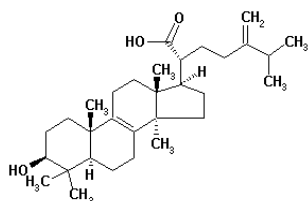
ITEM	SPECIFICATION	TEST METHOD
Identification	Match NIH - NCBI Genebank data	Genetic Testing through DNA BLAST
Purity Tests		
Total Plate Count:	< 1000 cfu / gram	Heavy Metals analyzed by a Perkin-Elmer HPLC apparatus using the technique called TotalQuant II
Yeast and Mold:	< 25 cfu / gram	Polysaccharides analyzed by modified Megazyme test method for 1,3-1,6 beta glucans and other polysaccharides
Total Coliform Bacteria:	Negative	Other tests performed as Standard methods of analysis for Hygienic Chemists
E. coli	Negative	
Salmonella:	Negative	
Staph Aureus:	Negative	
Pseudomonas:	Negative	
Heavy Metals:	< 10 ppm	
Total Polysaccharide Content:	> 35 %	
Loss on Drying	not more than 7.0 %	10 grams 105 degrees C for 1 hr
Ash	Not more than 1.0 %	Standard methods of analysis for Hygienic Chemists
Appearance	Granular powder, beige in color	Visual
Odor	Characteristics	Subjective bioassay
Other Ingredients	none	-
Particle Grind Size	From nano size up to 80 mesh	As specified by customer

Typical Uses for Shiitake:

- Used alone or as a component in Immune Enhancing Formula
- Used in soluble form as an additive for health drinks and energy bars
- Popular as an ingredient in general health formulas
- Popular in anti-viral formulas
- Used in Drinks and Soup Mixes

Up until now, most Shiitake came from China. Now you can source your Shiitake from the Largest, Most Reliable American supplier!

If you need 1 kilogram or 100 tons, We are your stocking source !



Aloha Medicinals Inc.

2300 Arrowhead Dr.
 Carson City, NV 89706
 Tel (775) 886-6300
 Email: sales@alohamedicinals.com

